

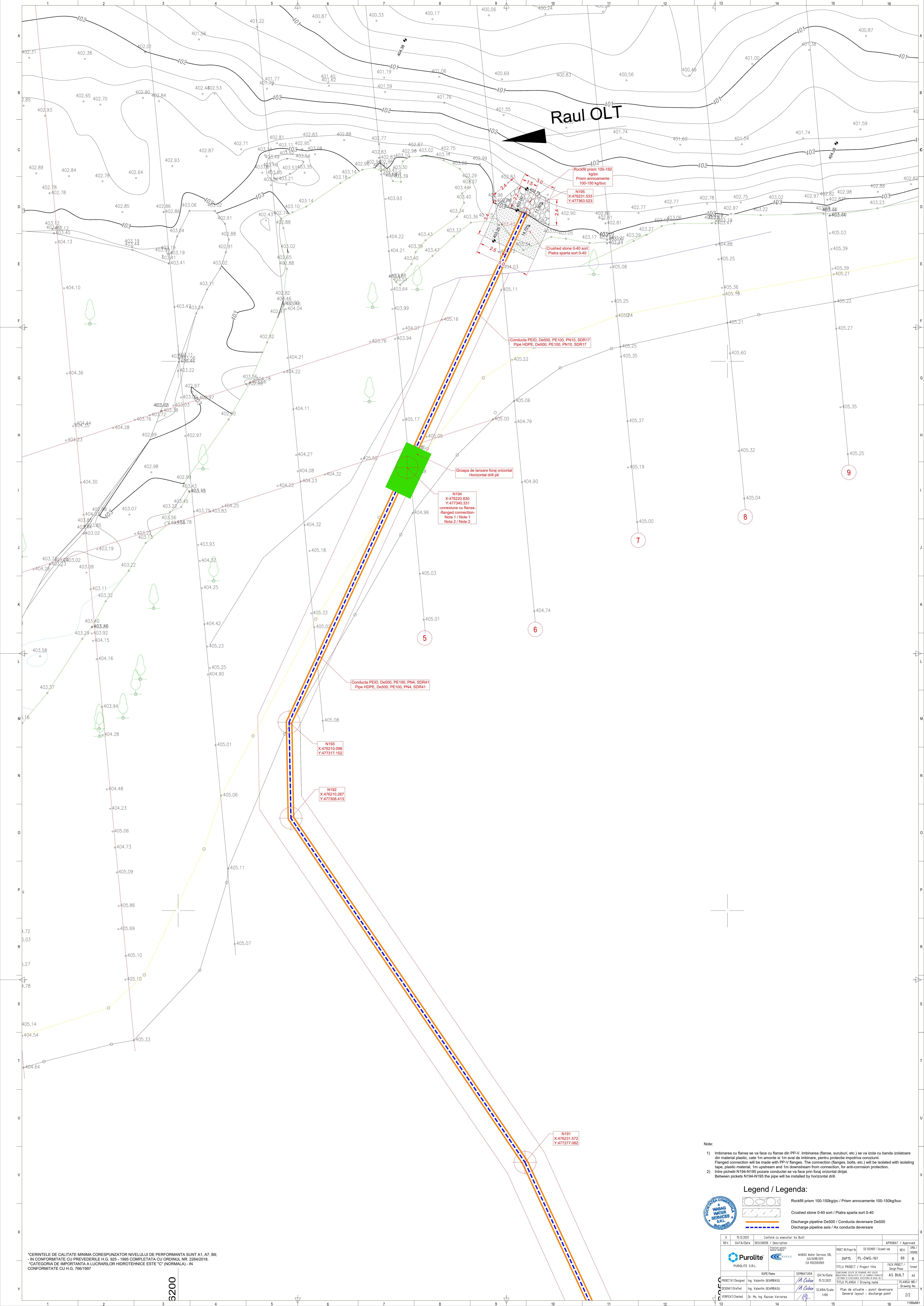


Legend / Legenda:

- Rockfill prism 100-150kg/pc / Prism anrocamente 100-150kg/buc
- Crushed stone 0-40 sort / Piatra sparta sort 0-40
- Discharge pipeline De500 / Conducta deversare De500
- Discharge pipeline axis / Ax conducta deversare

0	15.12.2021	Conform cu execuția/ As Built				APROBAT / Approved			
REV.	DATA/Date	DESCRIERE / Description				PROJECT NR./Project No.	COD DOCUMENT / Document code	REV.	LIMBA / Language
	PUROLITE S.R.L.		WABAG Water Services SRL J40/2658/2011 CUI R02393569	PROJECT NR./Project No.	COD DOCUMENT / Document code	REV.	LIMBA / Language		
						26P15	26P15-PL-DWG-161-00	00	B
TITLU PROIECT / Project title						FAZA PROIECT / Design Phase	Format		
NUME/Name		SEMNAȚURA		DATA/Date		P+T+D	A1		
PROIECTAT/Designed	Ing. Valentin GEAMBASU	/A. Coban		15.12.2021		TITLU PLANȘA / Drawing name			
DESENAȚ/Drafted	Ing. Valentin GEAMBASU	/A. Coban		SCARA/Scale		PLANȘA NR./ Drawing No.			
VERIFICAT/Checked	Dr. Ms. Ing. Razvan Varvorea	150		Plan de situație - punct deversare General layout - discharge point		1/2			

*CERINȚELE DE CALITATE MINIMA CORESPUNZATOR NIVELULUI DE PERFORMANȚA SUNT A1, A7, B9;
- IN CONFORMITATE CU PREVEDERILE H.G. 925 - 1995 COMPLETATA CU ORDINUL NR. 2264/2018.
*CATEGORIA DE IMPORTANȚA A LUCRĂRILOR HIDROTEHNICE ESTE "C" (NORMALA) - IN
CONFORMITATE CU H.G. 766/1997



Raul OLT

Note:

- Imbinarea cu flansa se va face cu flanse din PP-V. Imbinarea (flanse, suruburi, etc.) se va izola cu banda izolatoare din material plastic, cate 1m amonte si 1m aval de imbinare, pentru protectie impotriva coroziunii.
Flanged connection will be made with PP-V flanges. The connection (flanges, bolts, etc.) will be isolated with isolating tape, plastic material, 1m upstream and 1m downstream from connection, for anti-corrosion protection.
- Intre pichetii N194-N195 pozare conductei se va face prin foraj orizontal dirijat.
Between pickets N194-N195 the pipe will be installed by horizontal drill.

Legend / Legenda:



- Rockfill prism 100-150kg/pc / Prism anrocamente 100-150kg/buc
- Crushed stone 0-40 sort / Piatra sparta sort 0-40
- Discharge pipeline De500 / Conducta deversare De500
- Discharge pipeline axis / Ax conducta deversare

*CERINTELE DE CALITATE MINIMA CORESPUNZATOR NIVELULUI DE PERFORMANTA SUNT A1, A7, B9;
- IN CONFORMITATE CU PREVEDERILE H.G. 925 - 1995 COMPLETATA CU ORDINUL NR. 2264/2018.
*CATEGORIA DE IMPORTANTA A LUCRARILOR HIDROTEHNICE ESTE "C" (NORMALA) - IN CONFORMITATE CU H.G. 766/1997

REV.	DATA/Date	DESCRIERE / Description	PROIECT / Project No.	COPII / Copies	APROBAT / Approved	REV.	PROIECT / Project
1	15.12.2021	Conform cu executat / As Built	26P15	PL-DWG-161	00	B	
PROIECTAT/Designed	Ing. Valentin GEAMBASU	DATA/Date	15.12.2021	TITLUL PROIECT / Project title	FAZA PROIECT / Design Phase	AS BUILT	AS BUILT
DESEINAT/Drafted	Ing. Valentin GEAMBASU	SCARA/Scale	1:100	PLAN DE SITUATIE - punct deversare	General layout - discharge point	PLANSĂ NR./ Drawing No.	2/2
VERIFICAT/Checked	Dr. Ms. Ing. Razvan Varvora						